

# Blackjack<sup>®</sup> DX<sup>™</sup>

PoE Servers Powered by DW Spectrum

State of the art hyper-optimized video management platform designed for ease, speed and efficiency.

Blackjack DX Linux Slim Desktop Server — Up to 80Mbps

DW-BJDX11XXT-LX



Default Login Information for DW Spectrum

Default login information for the server's OS

|                        |                             |
|------------------------|-----------------------------|
| Username: <b>admin</b> | Password: <b>admin12345</b> |
|------------------------|-----------------------------|

|                         |                             |
|-------------------------|-----------------------------|
| Username: <b>dwuser</b> | Password: <b>Dw5pectrum</b> |
|-------------------------|-----------------------------|

## WHAT'S IN THE BOX

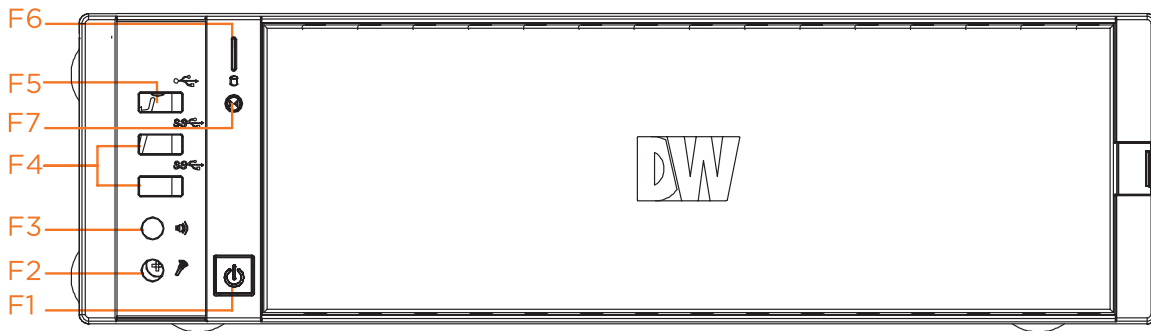
|                      |  |   |                    |  |       |
|----------------------|--|---|--------------------|--|-------|
| Blackjack DX™ server |  | 1 | Keyboard and mouse |  | 1 set |
| Quick start guide    |  | 1 | Power cable        |  | 1     |

**NOTE:** Download all your support materials and tools in one place.

1. Go to: <http://www.digital-watchdog.com/support-download/>.
2. Search your product by entering the part number in the 'Search by Product' search bar. Results for applicable part numbers will populate automatically based on the part number you enter.
3. Click 'Search'. All supported materials, including manuals, Quick start guides (QSG), software and firmware will appear in the results.

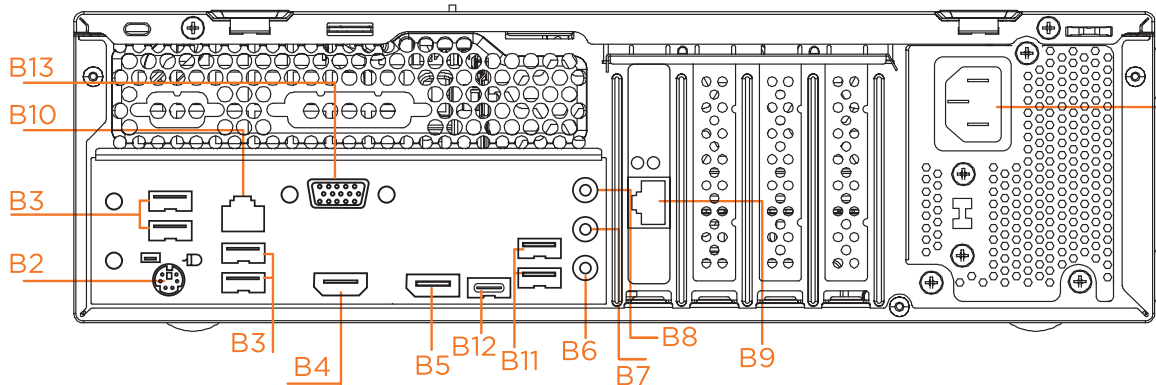
**Attention:** This document is intended to serve as a quick reference for initial setup. See the DW Spectrum® full manual for more information on features and functionality.

## FRONT PANEL



- F1 Power button
- F2 Microphone jack
- F3 Headphone jack
- F4 2x USB 3.0 ports
- F5 USB 2.0 ports
- F6 System health LED
- F7 Reset button

## REAR PANEL



- B1 AC power socket
- B2 PS/2 keyboard and PS/2 mouse ports
- B3 2x USB 2.0 ports
- B4 True HD port
- B5 DP port
- B6 Mic in (pink)
- B7 Line out (green)
- B8 Line in (blue)
- B9 Ethernet port to the camera network
- B10 Ethernet port to the local network
- B11 USB 3.0 ports
- B12 USB 3.0 ports (Type-C)
- B13 D-Sub port

Default Login Information for DW Spectrum

|                        |                             |
|------------------------|-----------------------------|
| Username: <b>admin</b> | Password: <b>admin12345</b> |
|------------------------|-----------------------------|

Default login information for the server's OS

|                         |                             |
|-------------------------|-----------------------------|
| Username: <b>dwuser</b> | Password: <b>Dw5pectrum</b> |
|-------------------------|-----------------------------|

## SPECIFICATIONS

|                                    |  |   |
|------------------------------------|--|---|
| MODEL                              | DW-BJDX11xxT-LX                          |   |
| Included IP licenses               | 4  |   |
| Form factor                        | Slim Desktop                             |   |
| Operating system                   | Linux Ubuntu <sup>®</sup>                |   |
| CPU                                | Intel <sup>®</sup> Processor             |   |
| Memory                             | 8GB                                      |   |
| Ethernet port                      | 2x 1G Ethernet (RJ45)                    |   |
| System                             | Max video storage rate                   | 80 Mbps   |
| Storage                            | Maximum HDD                              | 2 x SATA HDD  |
|                                    | Maximum storage                          | 40TB  |
| Video-out                          | Outputs                                  | 1x true HD, 1 x DisplayPort, 1x D-Sub for system configuration. 1 display output at a time. |
|                                    | Resolution                               | True HD: 4096x2160@60Hz, DisplayPort: 4096x2100@60Hz, D-Sub: 1920x1200@60Hz                 |
| Preloaded VMS software             | DW Spectrum Server                       |   |
| Keyboard and mouse                 | Included                                 |   |
| Power supply                       | 300W**                                   |   |
| Operating temperature and humidity | 41°F-104°F (5°C-40°C), 20-90% RH         |   |
| Dimension (WxDxH)                  | 13.1" x 3.8" x 15.6" (334 x 97 x 402 mm) |   |
| Other certification                | NDA, TAA                                 |   |
| Warranty                           | 5 year limited                           |   |

\* UPS recommended

Specifications and components mentioned are subject to change without notice.

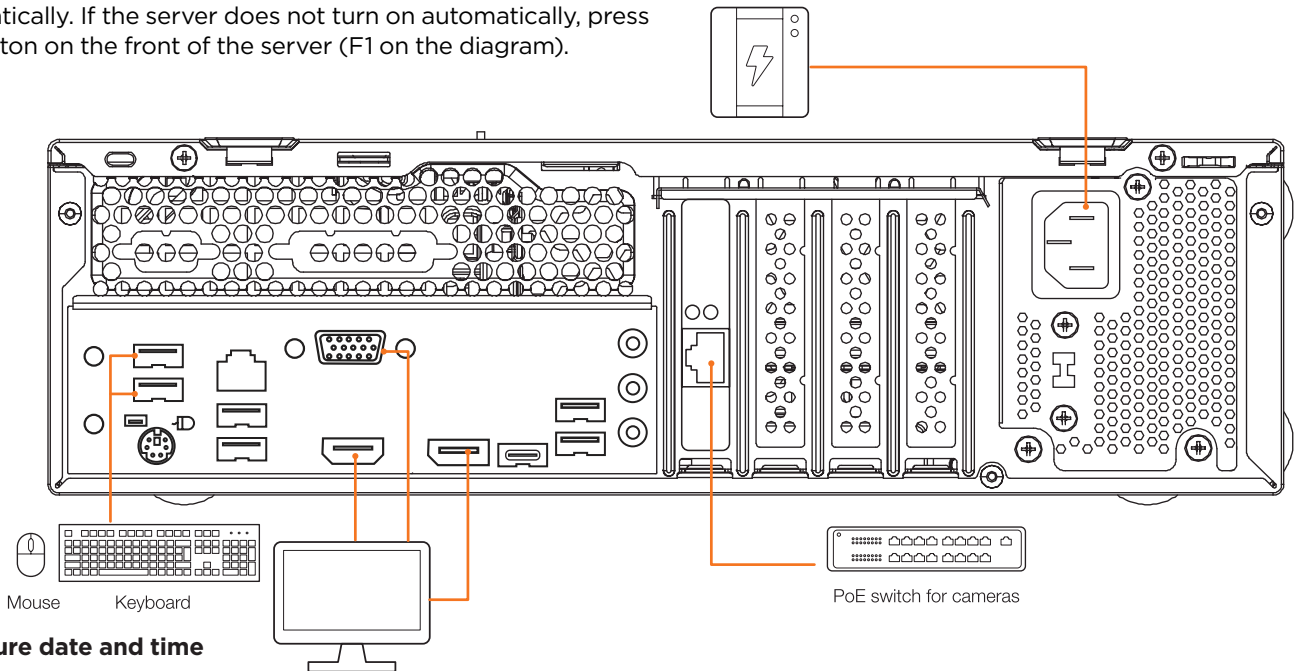
## SETTING UP THE SERVER

### STEP 1: Connect external devices, power and network.

1. Connect a monitor, USB keyboard, USB mouse and network cable to one of the Ethernet ports (B9 on the diagram). Configure the camera's network first, then configure the server's local network.

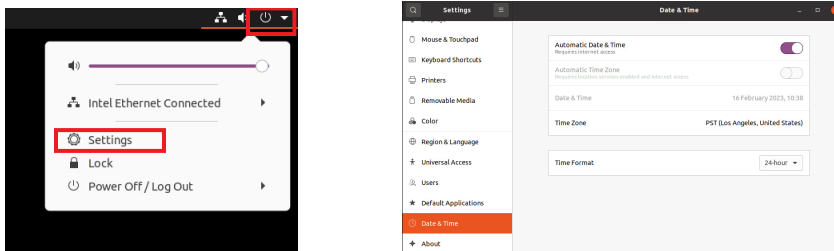
**NOTE** See page 2 for detailed back panel breakdown for each model.

2. Connect the server to an appropriate power source. A UPS system rated for 750VA or higher per PSU is recommended.
3. Connecting the power cable to a live power source may turn on the server automatically. If the server does not turn on automatically, press the power button on the front of the server (F1 on the diagram).

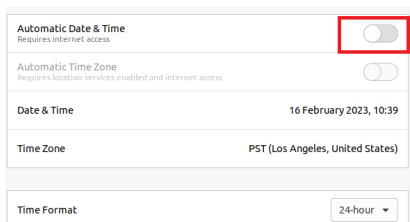


### STEP 2: Configure date and time

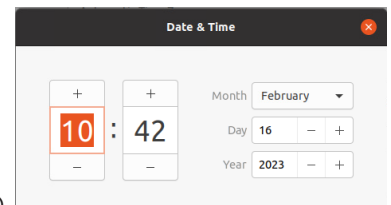
1. Open Settings and go to Details > Date & Time

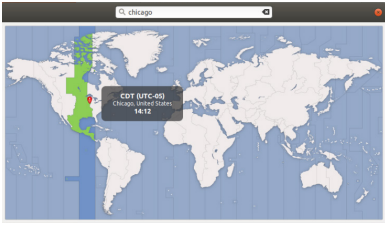


2. Turn OFF Automatic Date & Time and Automatic Time Zone



3. Click Date & Time and set correct date and time.
4. Click Time Zone and set to correct Time zone. (Type one of the largest cities in the time zone).





5. Close Settings.

### STEP 3: Configure network

Please have the following information ready before starting the network configuration.

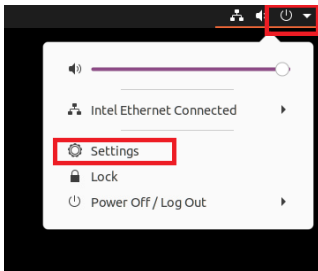
|                           | Camera network | Local network (LAN) |
|---------------------------|----------------|---------------------|
| IP address                |                |                     |
| Subnet mask / Netmask     |                |                     |
| Default gateway / Gateway | N/A            |                     |
| DNS servers               | N/A            |                     |

\* Camera network and local network cannot be on the same network.

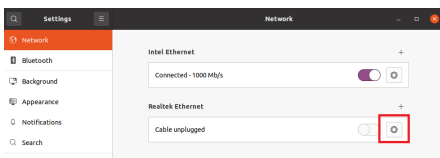
**NOTE** The Blackjack server's network settings are set to DHCP by default.

**NOTE** If you are not sure what information to enter, contact your Network Administrator or Internet Service Provider.

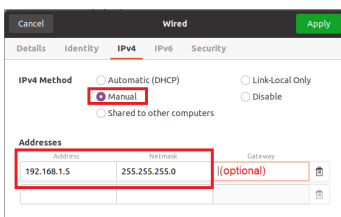
1. Open Settings > Network



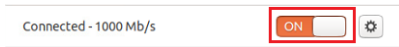
2. Click Setting of the Realtek Ethernet.



3. Change to Manual then enter Address, Netmask, Gateway.  
\* Do not enter Gateway information if there is no Gateway in this network.
4. Click Apply to save.



5. Restart the connection by switching OFF then turn ON. If the connection is off, connect the network cable.



6. Click Settings of the Intel Ethernet.
7. Change the settings if needed to access the Internet and for remote access from a local network.
8. Click Apply to save.
9. Restart the connection by switching OFF then turn ON. If the connection is off, connect the network cable.



**NOTE** If you are not connecting to the Blackjack® from the same network, you may be required to perform port forwarding on your router to access the server. Contact your Network Administrator or Installer for additional information

## CONFIGURE CAMERAS USING DW IP FINDER

Refer to the camera's QSG to configure any DW® IP camera's IP address using DW IP finder.

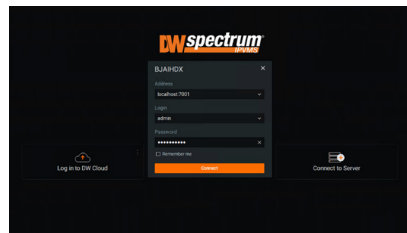
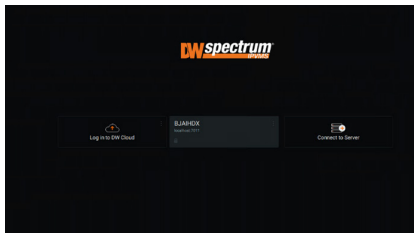
## SETTING UP DW SPECTRUM® MEDIA SERVER

Login: **admin**  
Password: **admin12345**

### STEP 1: Login from the Blackjack server

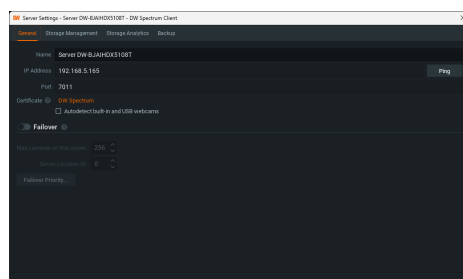
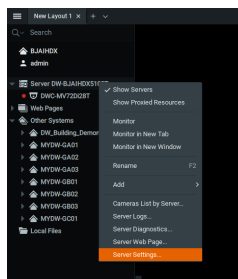


1. Open the DW Spectrum client.
2. Click on the pre-configured server.
3. If it does not log in automatically, enter the default password and click **Connect**.



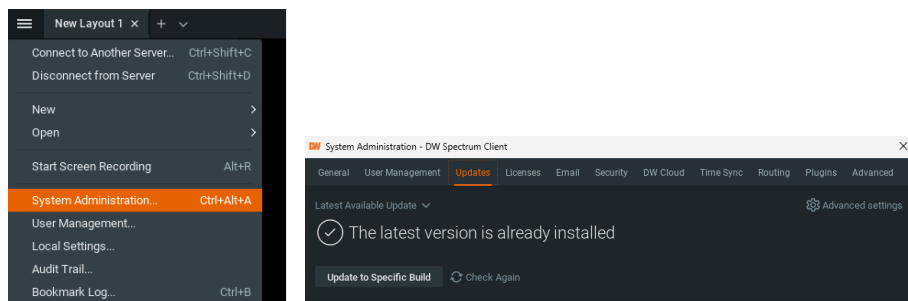
### STEP 2: To rename the server

1. Right click on the server name in the resource list on the left side and click **Server Settings...**
2. Enter the new server name in the name field and click **OK**.



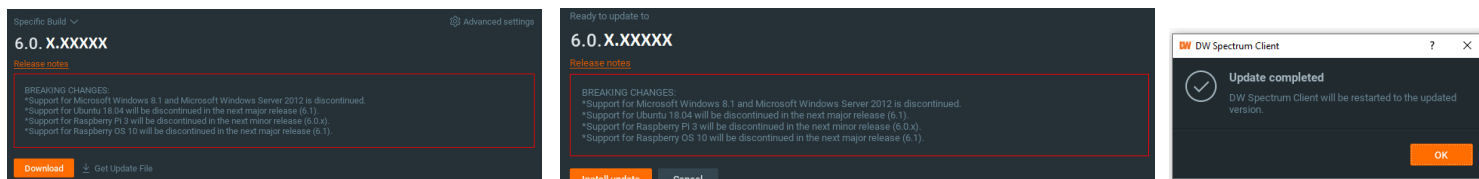
### STEP 3: To check for updates

1. Click the **main menu icon** in the upper-left corner of the DW Spectrum window, and click **System Administration...**
2. Click the **Updates** tab. If the system needs to be updated, click on the **Update** button.



\* If the latest version is already installed, the message “The latest version is already installed” will be visible at the top.

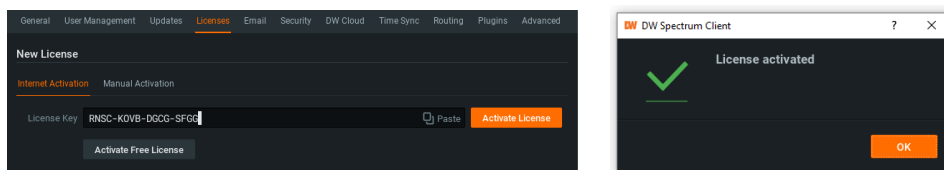
3. Click **OK** when the update is complete.



## STEP 4: Activate licenses

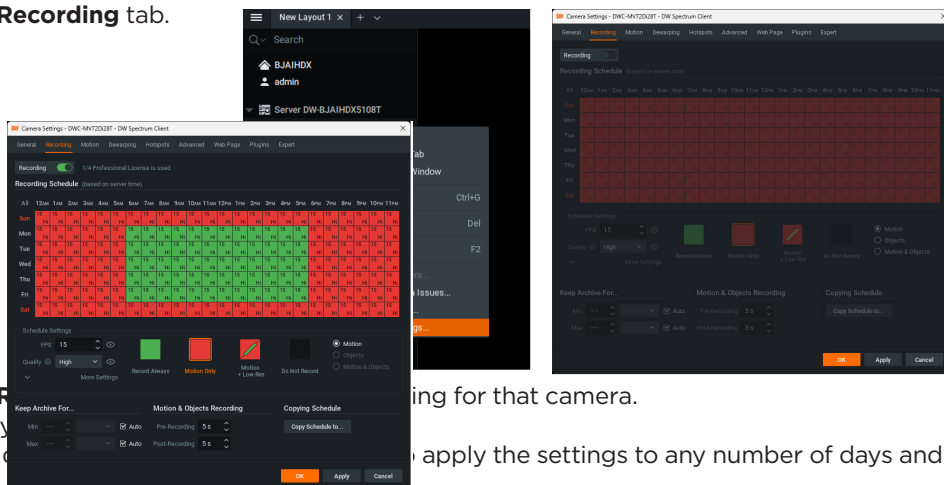
**NOTE** An active Internet connection is required.

1. Click the **main menu icon** in the upper-left corner of the DW Spectrum window, and click **System Administration...**
2. Click the **Licenses** tab. Enter the license key and click **Activate License**.  
\* Click **Activate Free License** to use a free, four channel license for 30 days.
3. Click **OK** when all necessary license keys are activated.



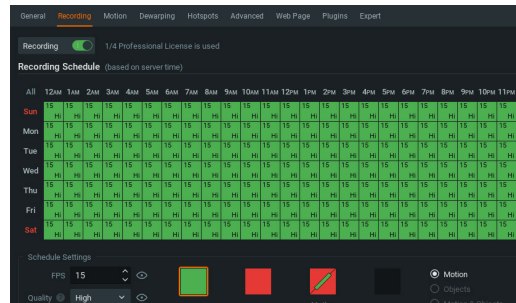
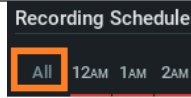
## STEP 5: Configure recording

1. Right click a camera in the resource list on the left side and click **Camera Settings...**
2. Click the **Recording** tab.



3. Click the **Recording** tab.
  4. Set quality to **High**.
  5. Click and drag the mouse to select a recording schedule for that camera.
- Click **Apply** to apply the settings to any number of days and times.

\* Click **All** to apply the recording settings to the entire schedule.



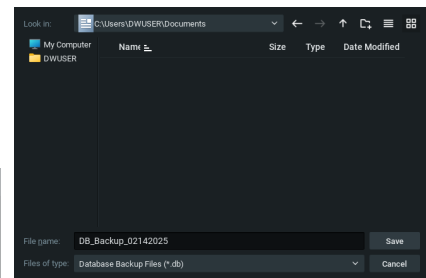
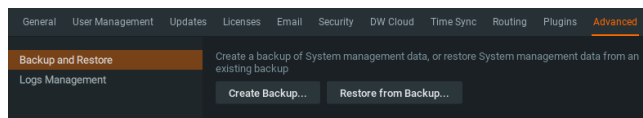
6. Click **OK** when the necessary recording schedule is set. A red circle will appear next to the camera in the resource list.

**NOTE:** A Recording License is required to allow a camera to record to the archive.

## STEP 6: Backup database

1. Click the **main menu icon** in the upper-left corner of the DW Spectrum window, and click **System Administration...**
2. Click the **Advanced** tab. Click **Create Backup...**
3. Select the location to save the database, and enter a name for the backup file. Click **Save**.

\* Creating a database backup to external storage before and after every update is strongly recommended.



**NOTE:** More information and instructions are available in the DW Spectrum user manual.

**NOTE:** This products is covered by one or more claims of the HEVC Patents listed at [patentlist.accessadvance.com](http://patentlist.accessadvance.com).



# TROUBLESHOOTING TIPS

| Problem                                    | Possible solutions  |
|--|---|
| My camera does not auto-discover           | <ol style="list-style-type: none"> <li>1. Is the camera in the same LAN network as the media server?</li> <li>2. Is your camera compatible with DW Spectrum? (Refer to our website for full list of supported cameras.)</li> <li>3. Is the camera updated to its latest firmware?</li> <li>4. If your camera is integrated with DW Spectrum via ONVIF, make sure ONVIF is enabled on your camera.</li> <li>5. Try adding the camera manually.</li> <li>6. Try rebooting the server after installation. Allow up to 2 minutes for the server to map your network and detect all supported devices.</li> </ol>  |
| Videos are slow                            | <ol style="list-style-type: none"> <li>1. Are you accessing the same cameras from multiple clients? (LAN and WAN)</li> <li>2. Do you have a Gigabit network? Check your network speed.</li> </ol>   |
| My camera appears disconnected             | <ol style="list-style-type: none"> <li>1. Under camera settings, make sure the user name and password are correct.</li> <li>2. Under the camera settings, use the 'Ping' button to make sure the camera is connected to the network properly.</li> <li>3. If you can connect to the camera's web viewer, try rebooting the camera and/or restore it to factory default.</li> <li>4. Make sure your camera is using the latest firmware available.</li> <li>5. Make sure that the camera is connected to the same network as the server.</li> <li>6. If you are connecting to a camera that is integrated with DW Spectrum via the ONVIF protocol (see list), make sure ONVIF is enabled.</li> <li>7. Make sure your user has permissions to view that specific camera.</li> </ol> |
| I cannot get playback video from my camera | <ol style="list-style-type: none"> <li>1. Do you have network connection between client and server (in case server and client are not on the same machine)?</li> <li>2. Make sure your user has playback viewing permissions for the selected channel.</li> <li>3. Make sure the camera is set to a recording mode that would provide recorded video for the selected time and environment.</li> <li>4. On the server side, check the media server log to make sure the camera you are trying to watch has not been unexpectedly disconnected.</li> </ol>   |
| I get 'unauthorized' message on my camera  | <ol style="list-style-type: none"> <li>1. Make sure the camera's user name and password are properly entered in the camera's general information under the camera settings menu.</li> <li>2. If necessary, try rebooting the camera to apply the camera's user name and password.</li> </ol>  |

## DW SPECTRUM SYSTEM REQUIREMENTS

### Recommended specs for the full client

|                   | Minimum                                 | Recommended                                   |
|-------------------|---|---|
| Processor         | Intel® i5 8th gen processor (or higher) | Intel® Core i7® 8th gen processor (or higher) |
| System RAM        | 8GB RAM                                 | 16GB RAM                                      |
| Video card        | Integrated Intel® graphics              | GeForce® GTX 1650 or better                   |
| Network interface | 2 x 1 Gbps                              | 2 x 1 Gbps                                    |
| OS Drive          | 256GB HDD                               | Dedicated 256GB SSD or larger                 |

|              |   |
|--------------|---|
| OS supported | <p><b>Microsoft Windows OS</b> (supported by both DW Spectrum® Server and Client).</p> <ul style="list-style-type: none"> <li>• Windows 10</li> <li>• Windows 11</li> <li>• Windows Server 2016</li> <li>• Windows Server 2019</li> <li>• Windows Server 2022</li> </ul> <p>**NOTE: DW Spectrum for Windows can be installed as a software bundle, or the Server and Client software can be installed separately.</p> |
|              | <p><b>Ubuntu (Debian-based Linux) OS</b> (supported by both DW Spectrum Server and Client).</p> <ul style="list-style-type: none"> <li>• Ubuntu 18.04 LTS "Bionic Beaver"</li> <li>• Ubuntu 20.04 LTS: "Focal Fossa"</li> <li>• Ubuntu 22.04 LTS: "Jammy Jellyfish"</li> </ul> <p>**NOTE: DW Spectrum for Ubuntu is only available for separate installations (not bundled).</p>                                      |
|              | <p><b>Macintosh OS</b> (supported only by the DW Spectrum Client. DW Spectrum Server is not available for macOS).</p> <ul style="list-style-type: none"> <li>• macOS 11.0, 11.1, 11.2 "Big Sur"</li> <li>• macOS 12 "Monterey"</li> <li>• macOS 12 "Monterey"</li> <li>• macOS 12 "Monterey"</li> </ul> <p>**NOTE: DW Spectrum for macOS is only supported by the DW Spectrum Client.</p>                             |

\* Except Storage Server version

Important: OS not listed will not be supported by DW® Tech Support.

Tel: +1 (866) 446-3595  
Fax: (813) 888-9262



www.digital-watchdog.com  
sales@digital-watchdog.com

Copyright © Digital Watchdog. All rights reserved. Specifications and pricing are subject to change without notice.