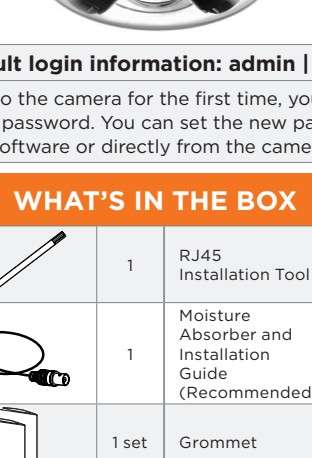


MEGAPIX FLEX™

Configurable Multi-Sensor IP Cameras

DWC-PVX20WATW



Default login information: admin | admin

When logging into the camera for the first time, you will be prompted to set up a new password. You can set the new password using the DW® IP Finder™ software or directly from the camera's browser menu.

WHAT'S IN THE BOX

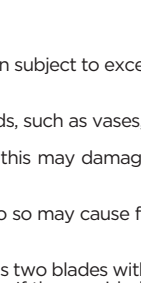
Star Wrench (T-20)		1	RJ45 Installation Tool		1
Test Monitor Cable		1	Moisture Absorber and Installation Guide (Recommended)		1
Quick Setup and Download Guides		1 set	Grommet		1
PoE Injector		1	Spare dome screws		Set of 7

ACCESSORIES REQUIRED TO INSTALL THE CAMERA (SOLD SEPARATELY)			
Wall mount bracket: DWC-PV20WAWW	Ceiling mount bracket: DWC-PV20CNW	Flush mount: DWC-PV20FMW	Junction box: DWC-PV20JUNCW
Parapet bracket and tilting adapter (each sold separately): DWC-PZPARAMW, DWC-PV20ADPW			

NOTE: Mounting accessories are required and sold separately.

NOTE: Download all your support materials and tools in one place

- Go to: <http://www.digital-watchdog.com/resources>
- Search your product by entering the part number in the 'Search by Product' search bar. Results for applicable part numbers will populate automatically based on the part number you enter.
- Click 'Search'. All supported materials, including manuals and quick start guide (QSGs) will appear in the results.



Attention: This document is intended to serve as a quick reference for the initial set-up. It is recommended that the user read the entire instruction manual for complete and proper installation and usage.

SAFETY AND WARNING INFORMATION

Read through this Installation Guide carefully before installing the product. Keep the Installation Guide for future reference. See the user manual for more information on the proper installation, use and care of the product. These instructions are intended to ensure that users can use the product correctly to avoid danger or property loss. Warnings: Serious injury or death may occur if any of the warnings are neglected. Cautions: Injury or equipment damage may occur if any of the cautions are neglected.

WARNING

- In the use of the product, you must be strict compliance with the electrical safety regulations of the nation and region. When the product is mounted on a wall or ceiling, the device shall be firmly fixed.
- Be sure to use only the standard adapter specified in the specification sheet. Using any other adapter could cause late, electrical shock, or damage to the product.
- Make sure the power supply voltage is correct before using the camera.
- Incorrectly connecting the power supply or replacing the battery may cause an explosion, fire, electric shock, or damage to the product.
- Do not connect multiple cameras to a single adapter. Exceeding the capacity may cause excessive heat generation or fire.
- Securely plug the power cord into the power source. An insecure connection may cause a fire.
- When installing the camera, fasten it securely and firmly. A falling camera may cause personal injury.
- Do not install in a location subject to elevated temperature, low temperature, or high humidity. Doing so may cause fire or electric shock.
- Do not place conductive objects (e.g. screwdrivers, coins, metal items, etc.) or containers filled with water on top of the camera. Doing so may cause personal injury due to fire, electric shock, or falling objects.
- Do not install in humid, dusty, or sooty locations. Doing so may cause fire or electric shock.
- Do not install near any heat sources such as radiators, heat registers, or other products (including amplifiers) that produce heat.
- Keep out of direct sunlight and heat radiation sources. It may cause a fire.
- If any unusual smells or smoke come from the unit, stop using the product at once. Immediately disconnect the power cord and contact the service center. Continued use in such a condition may cause fire or electric shock.
- The product does not operate normally, contact the nearest service center. Never disassemble or change this product in any way.
- When cleaning the product, do not spray water directly onto parts of the product. Doing so may cause fire or electric shock.

CAUTION

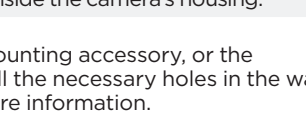
- Use proper safety gear when installing and wiring the product.
- Do not drop objects on the product or apply strong shock to it. Keep away from a location subject to excessive vibration or magnetic interference.
- Do not use this product near water.
- The product shall not be exposed to dripping or splashing and no objects filled with liquids, such as vases, shall be placed on the product.
- Avoid aiming the camera directly towards extremely bright objects such as the sun, as this may damage the image sensor.
- The Main plug is used as a disconnect device and shall stay readily operable at any time.
- Remove the power adapter from the outlet when there is lightning. Neglecting to do so may cause fire or damage to the product.
- Do not block any ventilation openings. Install following the manufacturer's instructions.
- A polarized or grounding-type plug is recommended for this product. A polarized plug has two blades with one wider than the other. A grounding-type plug has two blades and a third grounding prong. If the provided plug does not fit into your outlet, consult an electrician for replacement.
- Protect the power cord from being walked on or pinched particularly at plugs, convenience receptacles, and the point where they exit from the product.
- If any laser equipment is used near the product, make sure the surface of the sensor is not exposed to the laser beam as that may damage the sensor module.
- If you want to move the already installed product, be sure to turn off the power and then move or reinstall it.
- Proper configuration of all passwords and other security settings is the responsibility of the installer and/or end-user.
- If cleaning is necessary, please use a clean cloth to wipe it gently. If the device will not be used for a long time, please cover the lens cap to protect the device from dirt.
- Do not touch the camera's lens or sensor module with fingers. If cleaning is necessary, please use a clean cloth to wipe it gently. If the device will not be used for a long time, please cover the lens cap to protect the device from dirt.
- Use only attachments/accessories specified by the manufacturer.
- The Main plug is used as a disconnect device and shall stay readily operable at any time.
- Use only with cart, stand, tripod, bracket, or table specified by the manufacturer, or sold with the product.
- Unplug this product when a cart is used. Use caution when moving the cart/product combination to avoid injury from tip-over.
- Refer all servicing to qualified service personnel. Servicing is needed when the product has been damaged in any way, such as power supply cord or plug is damaged, liquid has been spilled or objects have fallen into the product, the product has been exposed to rain or moisture, does not operate normally, or has been dropped.

STEP 1 - PREPARING TO MOUNT THE CAMERA

- For the installation process, remove the dome cover from the camera.
- Connect the camera's dome to the camera base using the safety wire. Hook the safety wire to the screw at the base of the camera.



- Keep the inner and outer protective films on the dome.
- Install the moisture absorber under the camera's network cable connector:
 - Remove the moisture absorber from the packaging and fold it in half.
 - Remove the existing moisture absorber and replace with the one new to the side of the RJ45 port, next to the camera's base.



NOTE: In cases where the camera can experience a moisture issue, keep the moisture absorber in the camera.

WARNING: It is highly recommended that you install the moisture absorber when mounting the camera. The moisture absorber prevents moisture from being captured inside the camera's housing.

- Using the mounting template for the mounting accessory, or the mounting accessory itself, mark and drill the necessary holes in the wall or ceiling. See the accessory's QSG for more information.

NOTE: A wall mount, ceiling mount, junction box, or in-ceiling flush mount are sold separately and are required to complete the camera's installation.

- Secure the camera base to the mounting accessory using the second safety wire.

STEP 2 - POWERING THE CAMERA

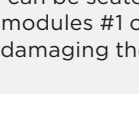
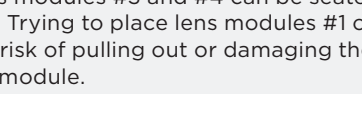
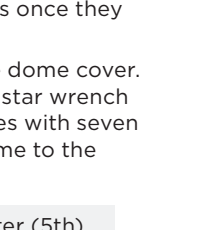
Pass the wires through the mounting accessory and make all the necessary connections at the base of the camera. See STEP 4.

- When using a PoE switch or PoE Injector (included), connect the camera using an Ethernet cable for both data and power.
- When not using a PoE switch or PoE Injector, connect the camera to the switch using an Ethernet cable for data transmission and use a power adapter to power the camera.

Power requirements	Power consumption
DC12V, PoE IEEE 802.3bt PoE+ class 5 (High power PoE injector included)	DC12V: max 28W PoE: max 31W

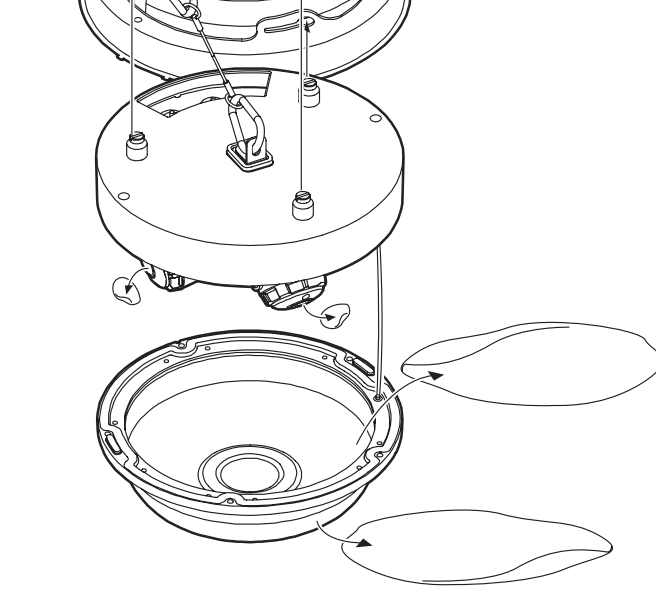
STEP 3 - MOUNTING THE CAMERA

- Secure the camera base to the mounting accessory. Align the indented lines on the side of the camera with the lines on the mounting bracket. Rotate the camera counter-clockwise to lock it into position.
- Adjust the camera modules' position on the magnetic surface. The camera modules can be moved between 1-5 positions for the ultimate coverage and view. Each camera is labeled 1-4 for the module's order. The modules snap into position on the magnetic track.
- Adjust the camera modules' angle and direction. Each camera can be rotated 350° and tilted a maximum of 80°.

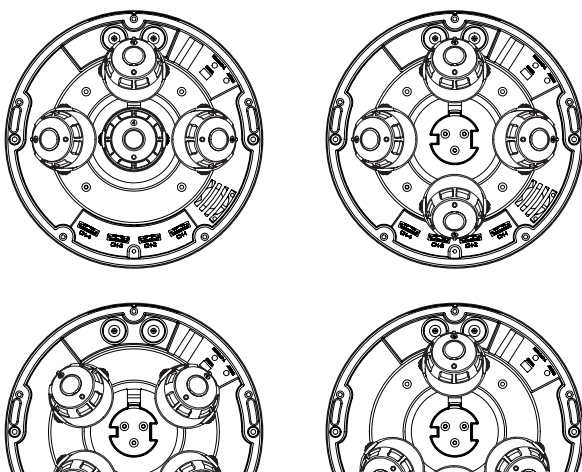


- Remove the protective film attached to each of the lens modules once they are in place.
- Remove the protective films from both inside and outside of the dome cover. Secure the dome cover to the camera's base using the included star wrench and dome screws to complete the installation. The camera comes with seven (7) dome screws. You will need five (5) screws to secure the dome to the camera base. There are additional two (2) spare screws.

NOTE: Only lens modules #3 and #4 can be seated in the center (5th) position. Trying to place lens modules #1 or #2 in the center may result in risk of pulling out or damaging the wire connection for the lens module.



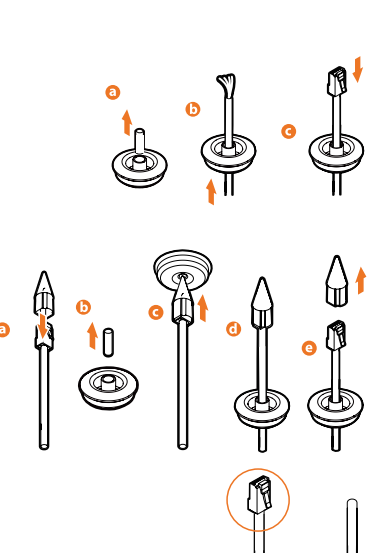
Lens modules configuration options



STEP 4 - CABLING

- Network cable** - To connect an RJ45 cable to the camera:

- Remove the grommet plug.
- Pass the network cable through the grommet at the base of the camera.
- Once the cable is through, add the RJ45 connector and connect to the network port.



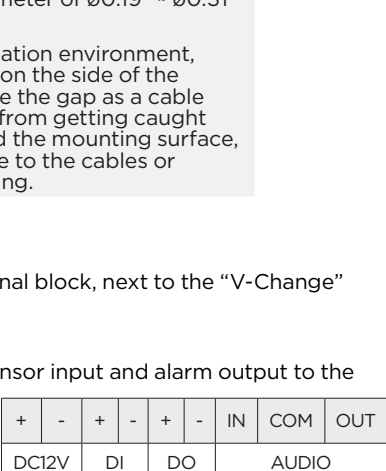
- Attach the included RJ45 installation tool to the network cable.
- Remove the grommet plug.
- Pass the network cable through the grommet. Pay attention to the direction of the grommet connection.
- Once the connector is through, remove the installation tool.

Once the network cable is passed through the grommet:

- Insert the grommet into the bottom of the camera base.

NOTE: Bending the cable may cause water leakage.

- Connect the RJ45 into the camera's network input at the base of the camera.



NOTE: Use the cable with a diameter of $\varnothing 0.19'' - \varnothing 0.31''$ ($\varnothing 5.0 - \varnothing 8.0\text{mm}$). Depending on the installation environment, remove the rubber plug on the side of the camera's bracket and use the gap as a cable guide to prevent cables from getting caught between the camera and the mounting surface, which can cause damage to the cables or prevent a proper mounting.

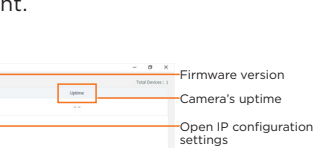
The camera's power, sensor and audio ports are on a terminal block, next to the "V-Change" toggle and Reset button.

- Power** - See step 2 above.
- Sensor/alarm input and output** - connect an external sensor input and alarm output to the camera's terminal block.
- Audio input** - use the camera's audio-in port to connect a microphone or "line out" port of an amplifier.

+	-	+	-	+	-	IN	COM	OUT
DC12V	DI	DO				AUDIO		

STEP 5 - MANAGING THE SD CARD

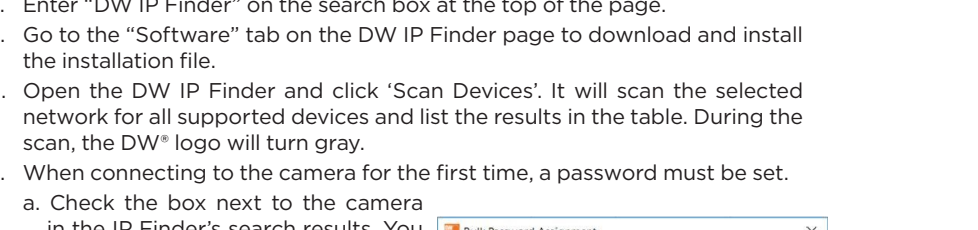
- Locate the SD card slots at the base of the camera. The camera supports up to four (4) SD cards.
- Insert a card into an SD card slot by pressing the SD card into the slot until it clicks into position.
- Press the card inward to release it from the card slot.



NOTE: Maximum SD Card size supported: Up to 1TB micro SD / FAT32. When inserting the SD card into the card slot, the SD card's contacts should be facing upward, as shown in the diagram.

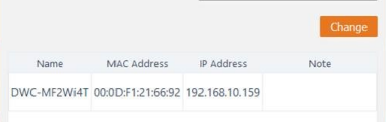
STEP 6 - DW® IP FINDER™

Use the DW IP Finder software to scan the network and detect all MEGAPIX cameras, set the camera's network settings or access the camera's web client.

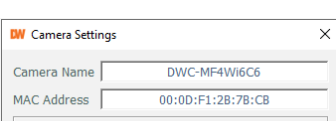


Network Setup

- To install the DW IP Finder, go to: <http://www.digital-watchdog.com>
- Enter "DW IP Finder" on the search box at the top of the page.
- Go to the "Software" tab on the DW IP Finder page to download and install the installation file.
- Open the DW IP Finder and click "Scan Devices". It will scan the selected network for all supported devices and list the results in the table. During the scan, the DW® logo will turn gray.
- When connecting to the camera for the first time, a password must be set.
 - Check the box next to the camera in the IP Finder's search results. You can select multiple cameras.
 - Click "Bulk Password Assign" on the left.
 - Enter admin/admin for the current username and password. Enter a new username and password to the right. Passwords must have a minimum of eight (8) characters and at least four (4) combinations of uppercase letters, lowercase letters, numbers and special characters. Passwords cannot contain the user ID.
 - Click "change" to apply all changes.



- Select a camera from the list by double-clicking on the camera's name or clicking on the "Click" button. The pop-up window will show the camera's current network settings. Admin users can adjust the settings as needed. The camera's network settings are set to DHCP by default.

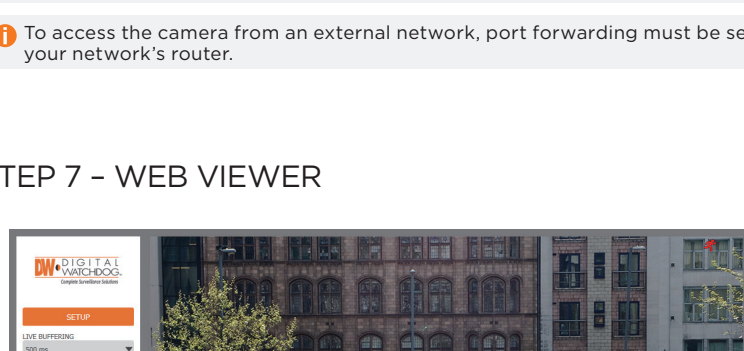


- To access the camera's web page, click on the "Website" button.
- To save changes made to the camera's settings, enter the username and password of the camera's admin account and click "Apply".

- Select 'DHCP' for the camera to automatically receive its IP address from the DHCP server.
- Select 'Static' to manually enter the camera's IP address, (Sub)Netmask, Gateway and DNS information.
- The camera's IP must be set to static if connecting to Spectrum® IPVMS.
- Contact your network administrator for more information.

To access the camera from an external network, port forwarding must be set in your network's router.

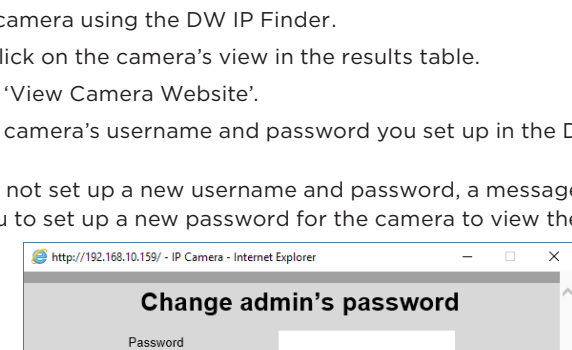
STEP 7 - WEB VIEWER



*The GUI display may differ by camera models.

- Find the camera using the DW IP Finder.
- Double-click on the camera's view in the results table.
- Press the 'View Camera Website'.
- Enter the camera's username and password you set up in the DW IP Finder.

If you did not set up a new username and password, a message will direct you to set up a new password for the camera to view the video.



- When accessing the camera for the first time, install the VLC player for web files to view video from the camera.

NOTE: Please see the full product manual for web viewer setup, functions and camera settings options.

NOTE: This product is covered by one or more claims of the HEVC Patents listed at patentlist.advance.com.

